



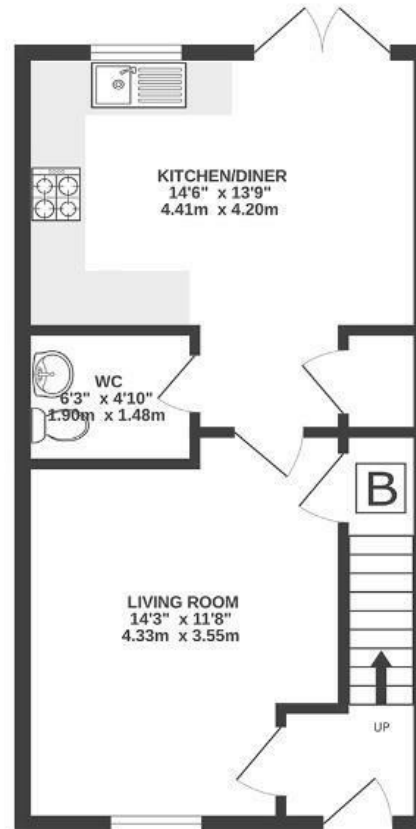
# Bishport Avenue

## HARTCLIFFE

APPROXIMATE FLOOR AREA  
103 SQM / 1110 SQFT



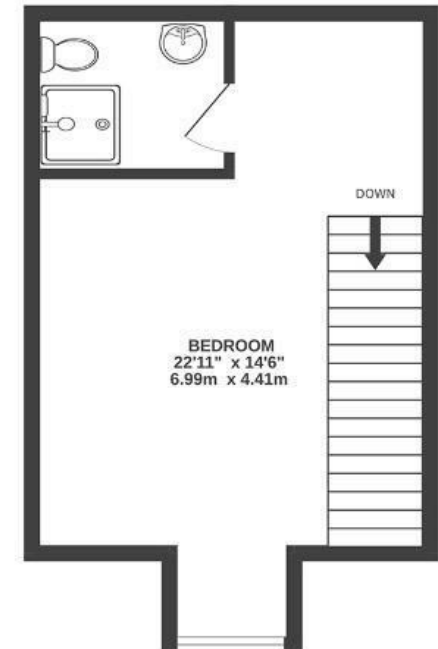
GROUND FLOOR



FIRST FLOOR



SECOND FLOOR



**Boardwalk**

# Bishport Avenue

, BRISTOL

---



£350,000



3 Bedrooms



BS13 0EA



2 Bathrooms

---

*"Bishport Avenue has been such a practical, comfortable home for people to live in. The layout across three floors means everyone has their own space, but it still feels warm and connected. The kitchen diner is where you'll spend most of our time, whether that's family dinners or having friends over. Knowing the house was newly built gives real peace of mind and the running costs are very low thanks to the energy efficiency"*

